



KDE

WHO ARE WE?



The KDE community is an international team developing and distributing Open Source software.

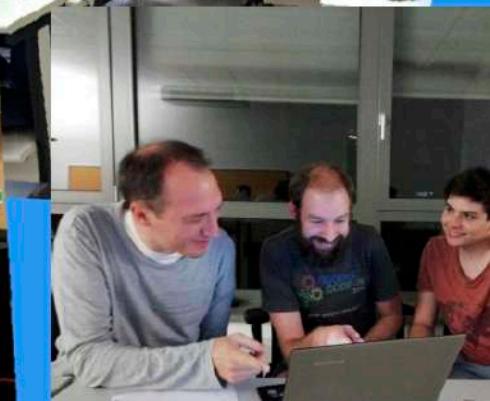
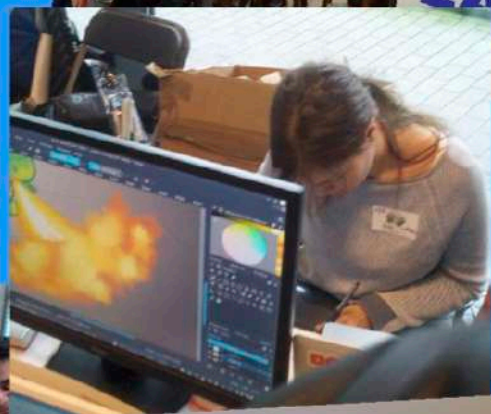




KDE is Community



KDE promotes cooperation, freedom, privacy and Open Source



WHAT DO WE DO?



PLASMA DESKTOP



The KDE Community builds the Plasma desktop. Plasma is customizable, flexible, full of features and lightweight. Plasma is available on most distros and comes preinstalled on many laptops and ultrabooks.

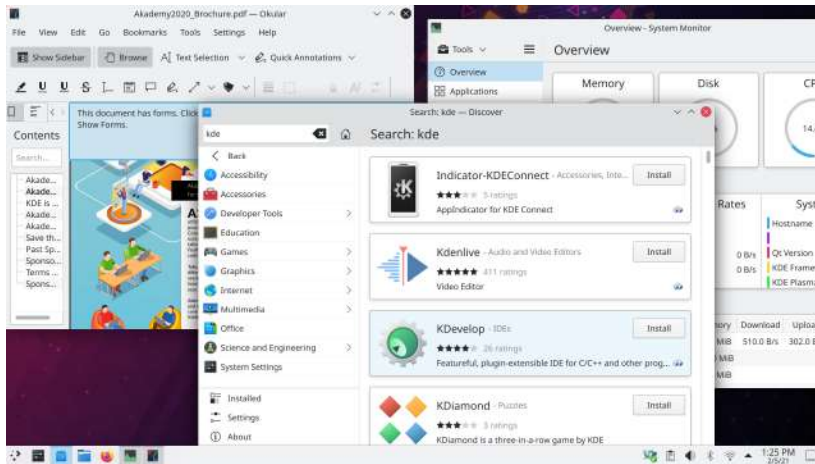


PLASMA MOBILE

We also create [Plasma Mobile](#), a free, open and privacy-protecting environment for phones, tablets and other mobile devices. Plasma Mobile has recently been chosen as the graphical environment that will ship with the new [PinePhone](#).



APPLICATIONS



KDE produces and maintains many high quality [applications](#) that cover from IDEs for developers and diagnostic tools for system monitoring, to programs for artists and educational software for teachers and students.

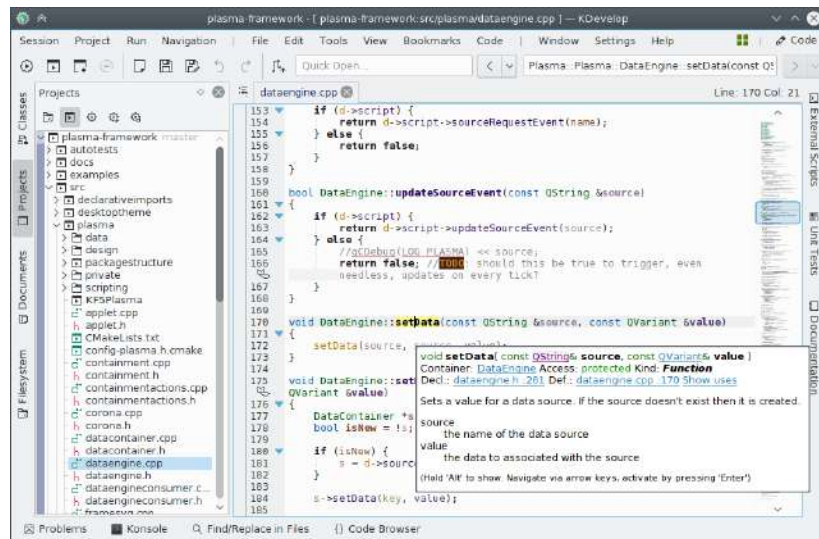


MORE ABOUT APPLICATIONS



KDEVELOP

KDevelop is a cross-platform IDE for C, C++, Python, QML/JavaScript and PHP that significantly simplifies the creation of sophisticated applications. KDevelop supports Linux, FreeBSD, macOS and other Unix flavors as well as Microsoft Windows.

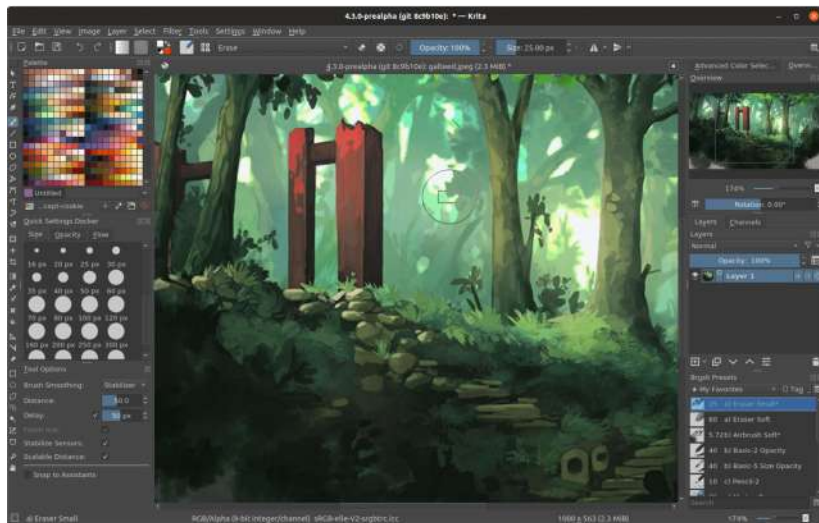


The screenshot shows the KDevelop IDE interface. The main window displays a C++ source file named `dataengine.cpp`. The code includes several functions: `updateSourceEvent`, `updateSourceEvent`, and `setData`. A tooltip is visible over the `setData` function, providing details about its signature and usage. The tooltip text is as follows:

```
void setData(const QString& source, const QVariant& value)
Container: DataEngine Access: protected Kind: Function
Decl.: dataengine.h:261 Def.: dataengine.cpp:170 Show uses
Sets a value for a data source. If the source doesn't exist then it is created.
DataContainer *s
bool isNew = false;
source
    the name of the data source
value
    the data to associated with the source
(Hold 'Alt' to show. Navigate by arrow keys, activate by pressing 'Enter')
```



KRITA

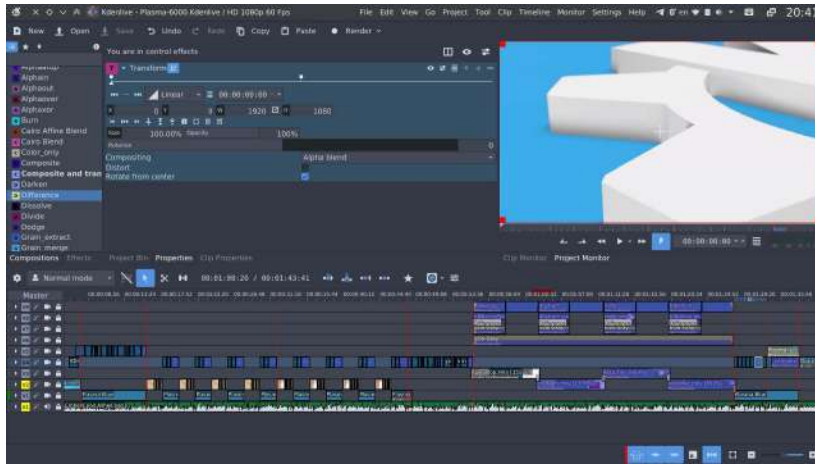


[Krita](#) is an amazingly popular graphic design application for painters. It includes 100s of professionally developed brushes and features and is especially designed to help artists realize their vision.

Krita is available for Linux, Windows and macOS, and there is a version in development for Android that is touch-enabled.



KDENLIVE



Kdenlive is a full-featured video editor that lets you apply effects, link clips with sophisticated transitions, correct color, dub audio and apply subtitles to your movies.



GCompris

GCompris is a high quality educational software suite, including over 100 activities for children aged 2 to 10. Some of the activities are game orientated, but all are educational.



These are but a few of the many apps created by the KDE Community. Besides, the family of KDE apps never stops growing. For example, you can now organize your visit to FOSSASIA with [Kongress](#), a desktop and mobile app that just recently reached version 1.0. Or you can chat with KDE staff and other attendees in [our dedicated chat room #fossasia:kde.org](#) using [Neochat](#), a new client for the Matrix chat network. Many more application projects join KDE or are created by KDE contributors every day. You can become a KDE developer too and enjoy all the services and support KDE has to offer!



FRAMEWORKS



KDE's frameworks are not only used extensively by KDE developers, but provide a vast array of tools for everybody looking to streamline and simplify the development of cross-platform applications with beautiful and consistent graphical interfaces.

Kirigami, KWidgetsAddons, KConfig and KIO are just a few of the libraries you can use to build your next powerful and attractive apps.



EVENTS WE ORGANIZE



AKADKEY

TWENTYTWENTYONE

AKADEMY 2021

FRIDAY 18TH - FRIDAY 25TH JUNE

Akademy is the annual world summit of KDE, one of the largest Free Software communities in the world. It is a free, non-commercial event. [Akademy 2021 will be hosted online.](#)

The conference is expected to draw hundreds of attendees from the global KDE Community to discuss and plan the future of the Community and its technology. Many participants from the broad free and open source software community, local organizations and software companies will also attend.

Akademy features a 2-day conference with presentations on the latest KDE developments, followed by 5 days of workshops, Birds of a Feather (BoF) and coding sessions. It is an opportunity to meet key KDE contributors, learn about the latest features and enjoy the great atmosphere. You will meet developers, artists, translators, upstream and downstream maintainers, users, and free and open software industry leaders from all over the world.





Akademy
2020



LINUX APP SUMMIT



Online

May 13-15, 2021

WHAT IS LAS?

Applications are the foundation of the user experience and can be appreciated in all types of Linux environments. It is this reason that building a common app ecosystem is a valuable goal. At the [Linux Application Summit \(LAS\)](#), we will collaborate on all aspects aimed at accelerating the growth of the Linux application ecosystem.

At LAS you can attend talks, panels, and Q&As on a wide range of topics covering everything. From creating, packaging, and distributing apps, to monetization within the Linux ecosystem, designing beautiful applications, and more - all delivered by the top experts in each field. You will acquire insights into how to reach users, build a community around your app, what toolkits and technologies make development easier, which platforms to aim for, and much more.

LAS welcomes application developers, designers, product managers, user experience specialists, community leaders, academics, and anyone who is interested in the state of Linux application design and development!

With that in mind, the topics we are interested in are:

- Creating, packaging, and distributing applications
- Design and usability
- Commercialization
- Community / Legal
- Platform
- Linux App Ecosystem



WHERE ARE WE?



To keep up to date with what is going on in the KDE Community, check out:

- [KDE's main site](#), which includes up-to-date news in the *Announcements* section
- KDE's [Twitter](#) and [Mastodon](#) feeds
- [Kreddit](#), KDE's subreddit
- KDE's chat channels on [Matrix](#), [IRC](#) and [Telegram](#)
- [KDE's Planet](#), that brings together the KDE contributors' blogs all in one place





JOIN US ON CHAT! WE HAVE STICKERS!

